



IDENTITÀ DI UN PASSAGGIO DI STATO. Daa è l'incontro tra un processo dedicato alla produzione di meccanica pesante e il design del mobile. Una via alternativa alla produzione seriale che pone designers e l'eccellenza industriale Made in Italy di fronte a una sfida inedita: realizzare complementi d'arredo attraverso gli strumenti e le abilità con cui si creano benne, bracci e telai per macchine movimento terra.

“Da a” significa dunque compiere un passaggio di stato. Come l'acqua reagisce alla temperatura assumendo sempre forme nuove, così un processo destinato a monolitici componenti meccanici genera, catalizzato dal confronto con il progettista, una nuova visione del design. È nello spazio bianco e nell'assoluta libertà creativa che risiede la forza e la sfida di questa esperienza di frontiera. L'assenza di un possibile confronto con percorsi precedenti e la possibilità di non riferirsi a stilemi predefiniti, generano un perfetto equilibrio tra la personalità dei singoli designer e l'idea che Daa vuole affermare e trasmettere.

Un'identità caratterizzata da un costante “in divenire” e, al contempo, da una precisa e consistente unicità. Daa include nell'oggetto una pluralità di voci per crearne una nuova, più forte e netta, fatta del rapporto plastico che si crea tra designer e materie, il metallo e non solo, processo industriale e abilità artigiana nel saldare, piegare, rifinire. Una coesione capace anche di dare nuova collocazione e valore al saper fare industria in Italia: la capacità produttiva, la ricerca di nuove soluzioni tecnologiche, il recupero e valorizzazione di tecniche di lavorazione millenarie.

Daa racconta attraverso i propri prodotti una riflessione capace di entrare in ogni tipologia di interior e outdoor, arredandolo e connotandolo in modo a volte confidenziale a volte manifesto. Una vocazione artistica che non scivola mai nella lontananza dall'utilizzatore o nella deliberata elusione dalla funzionalità dell'oggetto. Daa è ibridazione di competenze che danno vita a una specie nuova, destinata a creare, e ricreare nel tempo, infiniti modi di abitare.

da a





TRAME | BENNA | **SADDLE** INDOOR - OUTDOOR STOOL, METAL FRAME AND HIGH-TECH CORD BRAIDING [2-3] | OTRAN
| TWITTY | STRIP | DAIQUIRI | CROSSING | **INCONTRO** INDOOR - OUTDOOR POUF, RIGID POLYSTYRENE FRAME WITH
HAND-TROWELLED BLACK OR GREY LAVA DUST FINISH [2-3] | KOM | **DATE** INDOOR - OUTDOOR TABLE, HAND-WELDED
METAL FRAME AND METAL TOP [2-3] | NINFEA | RUBIC | TIE | DAME | METELLA | FANTE | RE | **SOUL** INDOOR - OUTDOOR
ARMCHAIR, CURVED METAL [4-5] | LINEA | **DEFRAME** INDOOR - OUTDOOR BOOKCASE MADE OF LASER-CUT HAND-
WELDED METAL [4-5] | HEN | CHARLIE | DUENDE | HYPPO | I-TUBE | **AEREA** INDOOR - OUTDOOR METAL SHEET BENCH [4-5]
| SEN-SU | SALENTO | SHEER | TATOU | SEN-TO | ROCK | CHIKA | DINKA | GROOVE | JETSET | NEWSLETTER | MILLERIGHE |
FIT | SOL | TRA-GUARDO | STICK | TECA | METELLA | RITROVO | JOSEPH | RING-O | **URUSHI** INDOOR - OUTDOOR LOW
TABLE, METAL FRAME AND TOP [4-5] | BAND | OH | ANACLETO | TORII | REGINA | BADRI | PIXIE | ILE | SUN |

THE SPIRIT OF DESIGN





AEREA | **CHARLIE** INDOOR - OUTDOOR CURVED METAL CHAIR^[10—11; 13] | **DINKA** INDOOR - OUTDOOR STOOL, METAL
FRAME AND HIGHTECH CORD BRAIDING, LEATHER^[12] | URUSHI | HEN | DUENDE | **SOL** INDOOR - OUTDOOR SOFA,
METAL FRAME AND NATURAL LEATHER^[12—13] | OTRAN | TWITTY | STRIP | HYPPO | SOUL | DEFRAME | SEN-SU | SALENTO
| **I-TUBE** INDOOR - OUTDOOR LOW TABLE METAL FRAME^[12—13; 14—15] | SHEER | TATOU | SEN-TO | **ROCK LOUNGE** INDOOR -
OUTDOOR METAL ARMCHAIR^[14—15] | CHIKA | GROOVE | JETSET | SADDLE | TRAME | BENNA | NEWSLETTER | MILLERIGHE
| FIT | TRA-GUARDO | STICK | TECA | METELLA | **LINEA** INDOOR - OUTDOOR METAL SHEET BENCH^[14—15] | RITROVO
| JOSEPH | RING-O | BIANCONIGLIO | BAND | OH | ANACLETO | KOM | NINFEA | DAIQUIRI | CROSSING | RUBIC | TIE |
DAME | **INCONTRO** INDOOR - OUTDOOR POUF, RIGID POLYSTYRENE FRAME WITH HAND-TROWELLED BLACK OR
GREY LAVA DUST FINISH^[15] | DATE | TORII | METELLA | FANTE | RE | REGINA | BADRI | PIXIE | ILE | SUN |



AEREA | LINEA | URUSHI | **HEN** INDOOR - OUTDOOR
ARMCHAIR, CURVED METAL^[18] | CHARLIE | DUENDE |
OTRAN | TWITTY | STRIP | HYPPPO | **I-TUBE** INDOOR -
OUTDOOR LOW TABLE METAL FRAME^[18] | INCONTRO
| SOUL | DEFRAME | SEN-SU | SALENTO | SHEER | TATOU
| SEN-TO | ROCK | CHIKA | DINKA | GROOVE | JETSET |
SADDLE | TRAME | BENNA | NEWSLETTER | MILLERIGHE |
FIT | SOL | TRA-GUARDO | STICK | TECA | METELLA | BADRI
| RITROVO | JOSEPH | RING-O | BIANCONIGLIO | BAND |
OH | ANACLETO | KOM | NINFEA | DAIQUIRI | CROSSING |
RUBIC | TIE | DAME | DATE | TORII | METELLA | FANTE | RE |
REGINA | PIXIE | ILE | SUN |



AEREA | LINEA | URUSHI | HEN | CHARLIE | DUENDE
| BADRI | OTRAN | TWITTY | STRIP | HYPPPO | I-TUBE |
INCONTRO | SOUL | DEFRAME | **SEN-SU** INDOOR -
OUTDOOR ARMCHAIR, METAL FRAME WITH METAL ROD
SEAT AND BACKREST_[20-21] | SALENTO | SHEER | TATOU |
SEN-TO | ROCK | CHIKA | DINKA | GROOVE | JETSET |
SADDLE | TRAME | **TORII** RECTANGULAR TABLE, INDOOR
- OUTDOOR, HANDWELDED METAL FRAME AND METAL
TOP_[20-21] | NEWSLETTER | MILLERIGHE | FIT | SOL | TRA-
GUARDO | STICK | TECA | METELLA | RITROVO | JOSEPH |
RING-O | BIANCONIGLIO | BAND | OH | ANACLETO | KOM
| NINFEA | DAIQUIRI | CROSSING | RUBIC | TIE | **BENNA**
INDOOR - OUTDOOR CURVED METAL SHEET BENCHES
SYSTEM_[23] | DATE | DAME | METELLA | FANTE | RE | REGINA |
PIXIE | ILE | SUN |





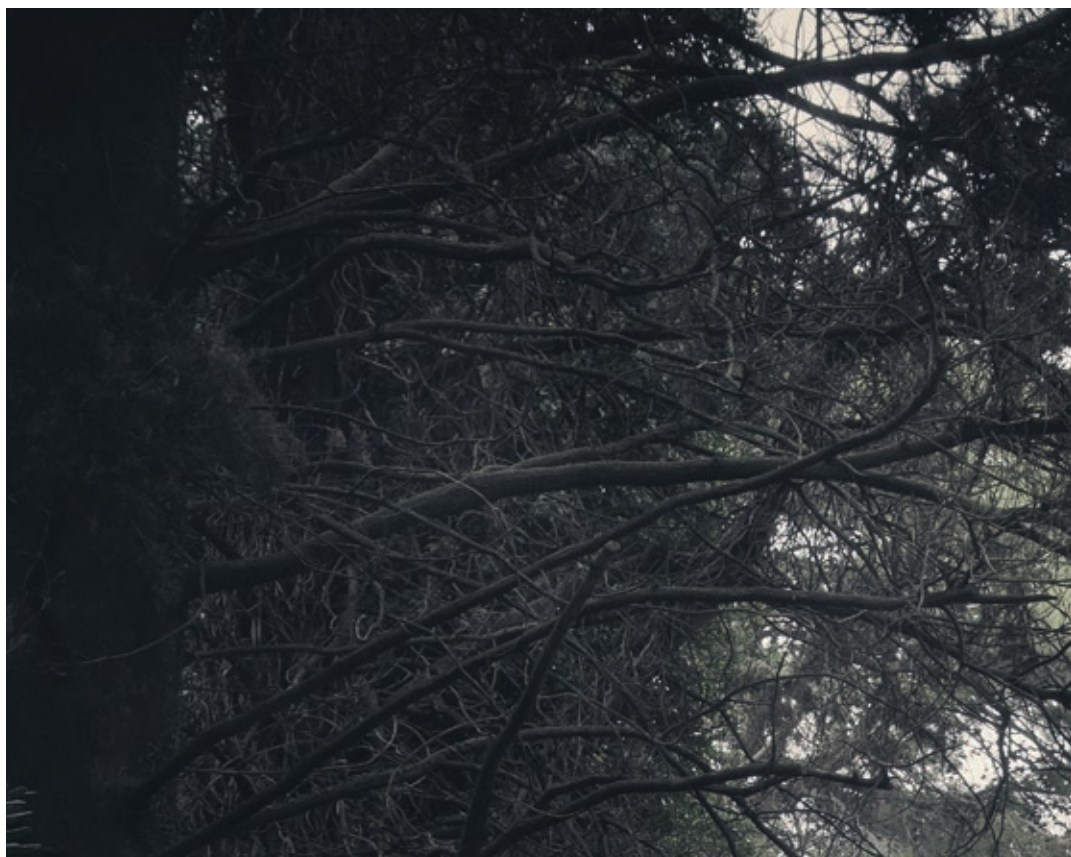


AEREA | LINEA | URUSHI | **BENNA** INDOOR - OUTDOOR CURVED METAL SHEET BENCHES SYSTEM^[24–25] | HEN | BADRI
| CHARLIE | DUENDE | **I-TUBE** INDOOR - OUTDOOR LOW TABLE METAL FRAME^[24–25] | OTRAN | TWITTY | **TRAME**
INDOOR - OUTDOOR POUF, CURVED METAL^[24–25] | STRIP | HYPPO | INCONTRO | SOUL | DEFRAME | SHEER | TATOU |
SEN-TO | **ROCK LOUNGE** INDOOR - OUTDOOR METAL ARMCHAIR WITH OR WITHOUT ARMRESTS^[25] | CHIKA | DINKA
| GROOVE | JETSET | SADDLE | SEN-SU | NEWSLETTER | MILLERIGHE | FIT | SOL | TRA-GUARDO | STICK | **SALENTO**
INDOOR - OUTDOOR CHAIR WITH OR WITHOUT ARMRESTS, METAL FRAME AND HIGH-TECH CORD BRAIDING^[27] |
TECA | METELLA | RITROVO | JOSEPH | RING-O | BIANCONIGLIO | BAND | OH | ANACLETO | KOM | NINFEA | DAIQUIRI
| CROSSING | RUBIC | TIE | DAME | DATE | TORII | METELLA | FANTE | RE | REGINA | **TRAME** INDOOR - OUTDOOR POUF
AND TABLE, CURVED METAL^[27] | PIXIE | ILE | SUN |



AEREA | LINEA | URUSHI | HEN | CHARLIE | DUENDE
| OTRAN | TWITTY | STRIP | HYPPO | I-TUBE | SOUL |
DEFRAME | TATOU | SEN-TO | DINKA | GROOVE | JETSET
| SADDLE | **TRAME** INDOOR - OUTDOOR POUF, CURVED
METAL^[30-31] | BENNA | NEWSLETTER | MILLERIGHE | FIT |
SOL | BADRI | TRA-GUARDO | STICK | TECA | METELLA
| RITROVO | RING-O | **JOSEPH** INDOOR - OUTDOOR
METAL WALL-STANDING MIRROR^[33] | BAND | OH | ROCK
ANACLETO INDOOR - OUTDOOR DIVIDER, LASER CUT
METAL SHEET^[33] | KOM | DAIQUIRI | **INCONTRO** INDOOR
- OUTDOOR POUF, RIGID POLYSTYRENE FRAME WITH
HAND-TROWELLED BLACK OR GREY LAVA DUST FINISH^[33] |
CROSSING | RUBIC | TIE | DAME | **CHIKA** INDOOR -
OUTDOOR ARMCHAIR, METAL FRAME AND HIGH-TECH
BLACK CORD BRAIDING + NATURAL LEATHER^[33] | DATE |
TORII | METELLA | FANTE | RE | REGINA | PIXIE | ILE | SUN |
SEN-SU | SALENTO | SHEER |









AEREA | LINEA | **RING-O** INDOOR - OUTDOOR SWING, HAND-WELDED AND CURVED METAL^[35] | URUSHI | HEN | BADRI
| CHARLIE | DUENDE | OTRAN | TWITTY | **INCONTRO** INDOOR - OUTDOOR POUF, RIGID POLYSTYRENE FRAME WITH
HAND-TROWELLED BLACK OR GREY LAVA DUST FINISH^[36-37] | SOUL | **HYPPO** INDOOR - OUTDOOR DIVIDER, LASER
CUT METAL SHEET^[36-37] | DEFRAME | **SALENTO** INDOOR - OUTDOOR CHAIR WITH OR WITHOUT ARMRESTS, METAL
FRAME AND HIGH-TECH CORD BRAIDING^[38-39] | SHEER | TATOU | SEN-TO | ROCK | CHIKA | DINKA | GROOVE | JETSET |
SADDLE INDOOR - OUTDOOR STOOL, METAL FRAME AND HIGH-TECH CORD BRAIDING^[38-39] | TRAME | BENNA | OH |
NEWSLETTER | MILLERIGHE | FIT | SOL | TRA-GUARDO | STICK | TECA | METELLA | RITROVO | JOSEPH | BIANCONIGLIO
| BAND | ANACLETO | KOM | NINFEA | DAIQUIRI | CROSSING | RUBIC | TIE | DAME | DATE | TORII | METELLA | FANTE | RE |
REGINA | STRIP | I-TUBE | **INCONTRO** INDOOR - OUTDOOR TABLE WITH METAL INTERNAL FRAME COVERED WITH
RIGID POLYSTYRENE, WOOD FIBRE TOP WITH HAND-TROWELLED BLACK LAVA DUST FINISH^[38-39] | SEN-SU | PIXIE |
ILE | SUN |





AEREA | **TRAME** INDOOR - OUTDOOR POUF, CURVED METAL^[42; 44] | LINEA | URUSHI | HEN | CHARLIE | DUENDE | OTRAN | TWITTY | **SOL** INDOOR - OUTDOOR SOFA, METAL FRAME AND NATURAL LEATHER^[42-43] | GROOVE | JETSET | SADDLE | **SUN** CARPET^[51] | STRIP | HYPPO | **BENNA** INDOOR - OUTDOOR CURVED METAL SHEET BENCHES SYSTEM^[40-41] | INCONTRO | SOUL | DEFRAME | SALENTO | **SEN-SU** INDOOR - OUTDOOR ARMCHAIR, METAL FRAME WITH METAL ROD SEAT AND BACKREST^[44] | SHEER | TATOU | SEN-TO | **ROCK CHAIR** INDOOR - OUTDOOR METAL ARMCHAIR^[44] | CHIKA | DINKA | NEWSLETTER | BADRI | MILLERIGHE | FIT | TRA-GUARDO | STICK | TECA | METELLA | RITROVO | **I-TUBE** INDOOR - OUTDOOR TABLE METAL FRAME^[42] | JOSEPH | RING-O | BIANCONIGLIO | BAND | OH | ANACLETO | KOM | NINFEA | DAIQUIRI | CROSSING | RUBIC | TIE | DAME | DATE | TORII | METELLA | FANTE | RE | REGINA | PIXIE | ILE |





AEREA | LINEA | **SEN-SU LOUNGE** INDOOR - OUTDOOR
ARMCHAIR, METAL FRAME WITH METAL ROD SEAT AND
BACKREST ^[46—47; 48] | HEN | CHARLIE | DUENDE | OTRAN |
TWITTY | STRIP | HYPPPO | INCONTRO | SOUL | DEFRAME
| SALENTO | SHEER | TATOU | SEN-TO | ROCK | CHIKA
| DINKA | **I-TUBE** INDOOR - OUTDOOR LOW TABLE
METAL FRAME ^[46—47; 48] | JETSET | GROOVE | SADDLE |
TRAME | BENNA | NEWSLETTER | MILLERIGHE | FIT | SOL
| TRA-GUARDO | STICK | TECA | METELLA | **URUSHI** LOW
TABLE, INDOOR - OUTDOOR, HAND-WELDED METAL
FRAME AND METAL TOP ^[46] | RITROVO | JOSEPH | RING-O |
BIANCONIGLIO | BAND | OH | ANACLETO | KOM | NINFEA
| DAIQUIRI | CROSSING | RUBIC | TIE | DAME | DATE | TORII |
METELLA | FANTE | RE | REGINA | BADRI | PIXIE | ILE | SUN |

AEREA | LINEA | **HEN** INDOOR - OUTDOOR ARMCHAIR,
CURVED METAL^[51] | CHARLIE | DUENDE | OTRAN | BADRI
| TWITTY | STRIP | HYPPO | I-TUBE | SOUL | DEFRAME |
SEN-SU | SALENTO | **SOL** INDOOR - OUTDOOR SOFA,
METAL FRAME AND NATURAL LEATHER^[51] | SHEER | TATOU
| SEN-TO | ROCK | CHIKA | DINKA | GROOVE | JETSET |
SADDLE | TRAME | BENNA | NEWSLETTER | MILLERIGHE
| FIT | **URUSHI** LOW TABLE, INDOOR - OUTDOOR,
HAND-WELDED METAL FRAME AND METAL TOP^[51] |
TRA-GUARDO | STICK | TECA | **ILE** CARPET^[51] | METELLA
| RITROVO | JOSEPH | RING-O | BIANCONIGLIO | BAND |
OH | ANACLETO | KOM | NINFEA | DAIQUIRI | CROSSING |
RUBIC | TIE | DAME | DATE | TORII | METELLA | FANTE | RE
| REGINA | PIXIE | SUN | **INCONTRO** INDOOR - OUTDOOR
POUF, RIGID POLYSTYRENE FRAME WITH HAND-
TROWELLED BLACK OR GREY LAVA DUST FINISH^[51] |





AEREA | LINEA | **SOL** INDOOR - OUTDOOR SOFA, METAL
FRAME AND NATURAL LEATHER^[52—53; 55] | HEN | CHARLIE
| DUENDE | OTRAN | TWITTY | STRIP | HYPPO | I-TUBE
| INCONTRO | SOUL | DEFRAME | **PIXIE** CARPET^[52—53]
SEN-SU | SALENTO | SHEER | TATOU | SEN-TO | ROCK |
CHIKA | DINKA | BADRI | **URUSHI** LOW TABLE, INDOOR -
OUTDOOR, HAND-WELDED METAL FRAME AND METAL
TOP^[50—51] | SUN | GROOVE | JETSET | SADDLE | TRAME |
BENNA | NEWSLETTER | MILLERIGHE | FIT | TRA-GUARDO
| STICK | TECA | METELLA | RITROVO | JOSEPH | RING-O |
BIANCONIGLIO | BAND | OH | ANACLETO | KOM | NINFEA
| DAIQUIRI | CROSSING | RUBIC | TIE | DAME | **SOL** INDOOR
- OUTDOOR LOW TABLE, METAL FRAME AND TOP,
ROUND VERSION ALSO AVAILABLE WITH ENGRAVED TOP
^[52—53; 55] | TORII | DATE | METELLA | FANTE | RE | REGINA | ILE |



IL FUTURO DEL DESIGN È PRONTO, PARTENDO DAL PRESENTE, COMPLESSO E ARTICOLATO, E SEGUENDO SENTIERI INESPLORATI ATTRAVERSO AREE DI CONFINE, CON DINAMICITÀ E APERTURA MENTALE COME BAGAGLIO. IL DESIGN IN DA A ASSUME IL RUOLO DI ELEMENTO DI CONNESSIONE, FUORI DAGLI SCHEMI, CHE INTEGRA PUNTI DI VISTA DIVERSIFICATI NELL’OTTICA DI UNO SVILUPPO SISTEMICO UTILIZZANDO I METODI DI CO-DESIGN.







LINEA SMALL INDOOR - OUTDOOR METAL SHEET BENCH^[57] | **URUSHI** | **HEN** | **CHARLIE** | **SEN-SU LOUNGE**
INDOOR - OUTDOOR ARMCHAIR, METAL FRAME WITH METAL ROD SEAT AND BACKREST^[58-59] | **DUENDE** | **OTRAN** | **TWITTY** | **STRIP** | **AEREA** **INDOOR - OUTDOOR METAL SHEET BENCH**^[58-59] | **HYPPO** | **I-TUBE** **INDOOR - OUTDOOR LOW TABLE METAL FRAME**^[58-59] | **INCONTRO** | **SOUL** | **DEFRAME** | **SALENTO** | **SHEER** | **TATOU** | **SEN-TO** | **ROCK** | **CHIKA** | **DINKA** | **GROOVE** | **JETSET** | **SADDLE** | **TRAME** **INDOOR - OUTDOOR POUF, CURVED METAL**^[58-59] | **BENNA** | **NEWSLETTER** | **ILE CARPET**^[58-59] | **MILLERIGHE** | **FIT** | **SOL** | **TRA-GUARDO** | **STICK** | **TECA** | **METELLA** | **RITROVO** | **JOSEPH** | **RING-O** | **BIANCONIGLIO** | **DAME** **INDOOR - OUTDOOR TABLE, HAND-WELDED METAL FRAME AND METAL TOP**^[60] | **BAND** | **OH** | **ANACLETO** | **KOM** | **NINFEA** | **DAIQUIRI** | **CROSSING** | **RUBIC** | **TIE** | **DATE** | **TORII** | **METELLA** | **FANTE** | **RE** | **REGINA** | **BADRI** | **PIXIE** | **SUN** |





AEREA | **DINKA** INDOOR - OUTDOOR STOOL, METAL
FRAME AND HIGHTECH CORD BRAIDING, LEATHER^[62-63]
LINEA | URUSHI | HEN | CHARLIE | DUENDE | OTRAN |
TWITTY | **BENNA** INDOOR - OUTDOOR CURVED METAL
SHEET BENCHES SYSTEM^[62-63] | STRIP | **ROCK CHAIR**
INDOOR - OUTDOOR METAL ARMCHAIR^[64-65; 67] | HYPPO
| INCONTRO | SOUL | DEFRAME | SEN-SU | SALENTO
| SHEER | TATOU | SEN-TO | CHIKA | GROOVE | JETSET
| SADDLE | TRAME | NEWSLETTER | **RUBIC** INDOOR -
OUTDOOR TABLE, HAND-WELDED METAL FRAME AND
METAL TOP^[64-65] | MILLERIGHE | FIT | SOL | TRA-GUARDO
| STICK | TECA | METELLA | RITROVO | JOSEPH | RING-O
| BIANCONIGLIO | BAND | KOM | **I-TUBE** INDOOR -
OUTDOOR TABLE METAL FRAME^[67] | OH | ANACLETO
| NINFEA | DAIQUIRI | CROSSING | TIE | DAME | DATE |
METELLA | FANTE | REGINA | TORII | BADRI | PIXIE | ILE |
SUN | RE |







AEREA | **ROCK CHAIR** INDOOR - OUTDOOR METAL
ARMCHAIR^[68-69] | LINEA | URUSHI | HEN | CHARLIE | OTRAN
| STRIP | **OH** RECTANGULAR INDOOR - OUTDOOR TABLE
WITH HAND-WELDED METAL FRAME^[68-69] | HYPPO |
BADRI | **NEWSLETTER** INDOOR - OUTDOOR BOOKCASE,
CURVED METAL^[68-69] | INCONTRO | SOUL | DEFRAME
| **SEN-SU LOUNGE** INDOOR - OUTDOOR ARMCHAIR,
METAL FRAME WITH METAL ROD SEAT AND BACKREST^[71]
| SALENTO | TATOU | SEN-TO | CHIKA | DINKA | GROOVE |
I-TUBE INDOOR - OUTDOOR LOW TABLE METAL FRAME
^[71] | JETSET | SADDLE | TRAME | BENNA | MILLERIGHE
| **URUSHI** LOW TABLE, INDOOR - OUTDOOR, HAND-
WELDED METAL FRAME AND METAL TOP^[71] | **TRA-**
GUARDO INDOOR - OUTDOOR METAL TRIMS SYSTEM^[71] |
FIT | SOL | STICK | TECA | METELLA | RITROVO | JOSEPH
| RING-O | BIANCONIGLIO | BAND | **SHEER** INDOOR -
OUTDOOR CHAIR WITH METAL FRAME AND FULL-GRAIN
LEATHER SEAT^[73] | **TWITTY** OVAL INDOOR - OUTDOOR
TABLE, METAL FRAME AND GLASS-HOLE INTO THE
TOP^[73] | ANACLETO | KOM | NINFEA | DAIQUIRI | CROSSING
| RUBIC | TIE | DAME | DATE | TORII | **METELLA** INDOOR
- OUTDOOR METAL FRAME^[73] | FANTE | RE | REGINA |
DUENDE INDOOR - OUTDOOR METAL TABLE LAMP WITH
DIRECTABLE LED SPOTLIGHT^[73] | PIXIE | ILE | SUN |







AEREA | LINEA | URUSHI | **TATOU** INDOOR - OUTDOOR
ARMCHAIR MADE OF CURVED METAL^[75] | CHARLIE | SUN
| DUENDE | OTRAN | TWITTY | STRIP | HYPPO | **I-TUBE**
INDOOR - OUTDOOR TABLE METAL FRAME^[75] | BADRI
| INCONTRO | SOUL | DEFRAME | SEN-SU | SALENTO |
SHEER | **HEN** INDOOR - OUTDOOR ARMCHAIR, CURVED
METAL^[76] | SEN-TO | ROCK | CHIKA | DINKA | GROOVE |
JETSET | SADDLE | **I-TUBE** INDOOR - OUTDOOR LOW
TABLE METAL FRAME^[76] | TRAME | BENNA | NEWSLETTER
| MILLERIGHE | **FIT** INDOOR - OUTDOOR METAL TRIMS
SYSTEM^[76] | SOL | TRA-GUARDO | STICK | TECA | METELLA |
RITROVO | JOSEPH | RING-O | BIANCONIGLIO | OH | **BAND**
INDOOR - OUTDOOR METAL TABLE LAMP^[76] | ANACLETO |
KOM | NINFEA | DAIQUIRI | CROSSING | RUBIC | TIE | DAME
| DATE | TORII | METELLA | FANTE | RE | REGINA | PIXIE | ILE |



BADRI RED CARPET ^[79] | **AEREA** | **LINEA** | **TECA INDOOR - OUTDOOR METAL CABINET** ^[79] | **URUSHI** | **HEN** | **CHARLIE** | **DUENDE INDOOR - OUTDOOR METAL TABLE LAMP WITH DIRECTABLE LED SPOTLIGHT** ^[81] | **OTRAN** | **TWITTY STRIP** | **HYPPO** | **I-TUBE** | **INCONTRO** | **SOUL** | **DEFRAME** | **SEN-SU LOUNGE** | **SALENTO** | **SHEER** | **TATOU** | **SEN-TO** | **ROCK** | **CHIKA** | **METELLA INDOOR - OUTDOOR METAL FRAME** ^[81] | **DINKA** | **GROOVE** | **JETSET** | **SADDLE FRAME** | **BENNA** | **NEWSLETTER** | **MILLERIGHE** | **FIT** | **SOL TRA-GUARDO** | **RITROVO INDOOR - OUTDOOR METAL WALL-STANDING MIRROR** ^[81] | **RITROVO** | **BADRI YELLOW CARPET** ^[81] | **JOSEPH** | **RING-O** | **BIANCONIGLIO** | **BAND OH** | **ANACLETO** | **KOM** | **NINFEA** | **DAIQUIRI** | **CROSSING** | **RUBIC** | **TIE** | **DAME** | **DATE** | **TORII** | **FANTE** | **RE** | **REGINA** | **PIXIE** | **ILE** | **SUN** |





AEREA | **INCONTRO** INDOOR - OUTDOOR POUF,
RIGID POLYSTYRENE FRAME WITH HAND-TROWELLED
BLACK OR GREY LAVA DUST FINISH^[82] | LINEA | URUSHI
| HEN | CHARLIE | DUENDE | OTRAN | TWITTY | STRIP |
HYPPO | I-TUBE | **NEWSLETTER** INDOOR - OUTDOOR
BOOKCASE, CURVED METAL^[82] | SOUL | DEFRAME | SEN-
SU | SALENTO | SHEER | TATOU | SEN-TO | **ROCK CHAIR**
INDOOR - OUTDOOR METAL ARMCHAIR^[85] | CHIKA |
DINKA | GROOVE | JETSET | SADDLE | TRAME | BENNA |
MILLERIGHE | FIT | SOL | TRA-GUARDO | STICK | TECA |
METELLA | RITROVO | JOSEPH | RING-O | BIANCONIGLIO
| BAND | **DEFRAME** ROUND INDOOR - OUTDOOR TABLE
LASER-CUT HAND-WELDED METAL FRAME AND METAL
TOP^[85] | ANACLETO | KOM | NINFEA | DAIQUIRI | CROSSING
| RUBIC | BADRI | TIE | DAME | DATE | TORII | METELLA |
FANTE | RE | REGINA | PIXIE | ILE | SUN |





ROCK LOUNGE INDOOR - OUTDOOR METAL ARMCHAIR^[86]
| LINEA | CHARLIE | DUENDE | OTRAN | **REGINA** INDOOR
- OUTDOOR METAL FURNITURE^[86] | HEN | TWITTY | STRIP
| HYPPPO | I-TUBE | INCONTRO | SOUL | DEFRAME | SEN-
SU | SALENTO | SHEER | TATOU | SEN-TO | CHIKA | DINKA
| GROOVE | JETSET | **URUSHI** LOW TABLE, INDOOR -
OUTDOOR, HAND-WELDED METAL FRAME AND METAL
TOP^[86] | SADDLE | TRAME | BENNA | NEWSLETTER |
MILLERIGHE | **BADRI RED** CARPET^[86] | FIT | SOL | **AEREA**
INDOOR - OUTDOOR METAL SHEET BENCH^[89] | TRA-
GUARDO | STICK | TECA | METELLA | RITROVO | JOSEPH |
RING-O | **FANTE** INDOOR - OUTDOOR METAL FURNITURE^[89]
| BIANCONIGLIO | BAND | OH | ANACLETO | KOM |
NINFEA | DAIQUIRI | CROSSING | RUBIC | TIE | DAME |
DATE | TORII | METELLA | PIXIE | ILE | SUN | **RE** INDOOR -
OUTDOOR METAL FURNITURE^[89] |







INCONTRO | **ROCK LOUNGE** INDOOR - OUTDOOR
METAL ARMCHAIR^[91] | CHIKA | OTRAN | TWITTY | STRIP |
HYPPPO | I-TUBE | SOUL | DEFRAME | SALENTO | SHEER
| TATOU | SEN-TO | DINKA | GROOVE | JETSET | SADDLE |
BENNA | NEWSLETTER | BADRI | MILLERIGHE | FIT | SOL
| TRA-GUARDO | STICK | **TRAME** INDOOR - OUTDOOR
POUF, CURVED METAL^[91] | TECA | METELLA | RITROVO |
RING-O | BIANCONIGLIO | BAND | OH | KOM | NINFEA
| SUN | **DUENDE** INDOOR - OUTDOOR METAL TABLE
LAMP WITH DIRECTABLE LED SPOTLIGHT^[91] | DAIQUIRI |
CROSSING | RUBIC | TIE | DAME | DATE | TORII | METELLA
| FANTE | RE | REGINA | PIXIE | ILE | **JOSEPH** INDOOR -
OUTDOOR METAL WALL-STANDING MIRROR^[92] | AEREA
| LINEA | **URUSHI** LOW TABLE, INDOOR - OUTDOOR,
HAND-WELDED METAL FRAME AND METAL TOP^[92] | HEN |
BADRI | CHARLIE | **SEN-SU LOUNGE** INDOOR - OUTDOOR
ARMCHAIR, METAL FRAME WITH METAL ROD SEAT AND
BACKREST^[92] |





ROCK POUF INDOOR - OUTDOOR METAL POUF^[95] | ILE |
AEREA | CHARLIE | **ROCK LOUNGE** INDOOR - OUTDOOR
METAL ARMCHAIR^[95] | JOSEPH | DUENDE | **TECA** INDOOR
- OUTDOOR METAL CABINET^[95] | SUN | OTRAN | TWITTY |
HYPPO | **BAND** INDOOR - OUTDOOR METAL TABLE LAMP^[95] |
URUSHI | SEN-SU LOUNGE | HEN | INCONTRO | SOUL
| DEFRAME | SEN-SU | SALENTO | SHEER | TATOU | SEN-
TO | CHIKA | GROOVE | DINKA | **BADRI YELLOW** CARPET^[95] |
JETSET | SADDLE | TRAME | BENNA | MILLERIGHE | FIT
| SOL | TRA-GUARDO | STICK | **ROCK DAYBED** INDOOR -
OUTDOOR METAL FRAME WITH FULL-GRAIN LEATHER^[96] |
METELLA | RITROVO | RING-O | BIANCONIGLIO | STRIP |
NEWSLETTER INDOOR - OUTDOOR BOOKCASE, CURVED
METAL^[96] | OH | ANACLETO | KOM | NINFEA | DAIQUIRI |
CROSSING | RUBIC | **I-TUBE** INDOOR - OUTDOOR LOW
TABLE METAL FRAME^[96] | TIE | DAME | DATE | TORII |
METELLA | FANTE | RE | REGINA | PIXIE |





AEREA | URUSHI | HEN | CHARLIE | DUENDE | OTRAN
| TWITTY | STRIP | HYPPO | **TRA-GUARDO** INDOOR -
OUTDOOR METAL TRIMS SYSTEM^[98-99; 100] | SOUL | **BAND**
INDOOR - OUTDOOR METAL TABLE LAMP^[98-99] | DEFRAME
| **SEN-SU** INDOOR - OUTDOOR ARMCHAIR, METAL FRAME
WITH METAL ROD SEAT AND BACKREST^[98-99] | SALENTO |
I-TUBE INDOOR - OUTDOOR TABLE METAL FRAME^[98-99] |
TATOU | **SHEER** INDOOR - OUTDOOR CHAIR WITH METAL
FRAME AND FULL-GRAIN LEATHER SEAT^[100] | SEN-TO |
CHIKA | DINKA | **TORII** RECTANGULAR TABLE, INDOOR -
OUTDOOR, HANDWELDED METAL FRAME AND METAL
TOP^[100] | GROOVE | JETSET | SADDLE | TRAME | BENNA |
NEWSLETTER | MILLERIGHE | FIT | SOL | STICK | METELLA
| RITROVO | JOSEPH | RING-O | OH | ANACLETO | KOM |
NINFEA | DAIQUIRI | CROSSING | RUBIC | TIE | DAME | DATE
| METELLA | FANTE | RE | ROCK | REGINA | **BADRI RED**
CARPET^[100] | PIXIE | ILE | SUN | BIANCONIGLIO |



AEREA | LINEA | **TRAME** INDOOR - OUTDOOR POUF,
CURVED METAL^[103] | HEN | CHARLIE | **JOSEPH** INDOOR -
OUTDOOR METAL WALL-STANDING MIRROR^[103] | SUN |
DUENDE | **BENNA** INDOOR - OUTDOOR CURVED METAL
SHEET BENCHES SYSTEM^[103] | **FIT** INDOOR - OUTDOOR
METAL TRIMS SYSTEM^[105] | TWITTY | STRIP | HYPPO | ILE |
I-TUBE | INCONTRO | SOUL | DEFRAME | SEN-SU | BADRI
| SALENTO | SHEER | **URUSHI** RECTANGULAR TABLE,
INDOOR - OUTDOOR, HANDWELDED METAL FRAME
AND METAL TOP^[105] | TATOU | SEN-TO | ROCK | KOM |
CHIKA | DINKA | GROOVE | JETSET | SADDLE | BENNA |
NEWSLETTER | **TATOU** INDOOR ARMCHAIR, CURVED
METAL WITH REMOVABLE STUFFED UPHOLSTERY
OF FULL-GRAIN LEATHER^[105] | TRA-GUARDO | STICK |
TECA | METELLA | RITROVO | RING-O | BIANCONIGLIO |
BAND INDOOR - OUTDOOR METAL TABLE LAMP^[105] | OH
| ANACLETO | NINFEA | OTRAN | DAIQUIRI | CROSSING |
RUBIC | TIE | DAME | DATE | TORII | METELLA | FANTE | RE |
REGINA | SOL | PIXIE | MILLERIGHE |









MILLERIGHE INDOOR - OUTDOOR METAL FRAME AND HAND-WELDED METAL ROD^[106] | **AEREA** | **HEN** | **CHARLIE** | **DUENDE** | **OTRAN** INDOOR - OUTDOOR ARMCHAIR WITH OR WITHOUT ARMRESTS, METAL FRAME WITH FULL-GRAIN LEATHER AND POUF^[106] | **TWITTY** | **STRIP** | **HYPPO** | **I-TUBE** INDOOR - OUTDOOR LOW TABLE METAL FRAME^[106] | **INCONTRO** | **TRAME** INDOOR - OUTDOOR POUF, CURVED METAL^[106] | **SOUL** | **SEN-SU** | **BADRI GREEN** CARPET^[106] | **ROCK LOUNGE** INDOOR - OUTDOOR METAL ARMCHAIR AND POUF^[109] | **SHEER** | **TATOU** | **SEN-TO** | **SALENTO** | **DINKA** | **GROOVE** | **JETSET** | **ROCK4 LOUNGE** INDOOR - OUTDOOR METAL ARMCHAIR AND POUF^[109] | **CHIKA** | **SADDLE** | **BENNA** | **NEWSLETTER** | **FIT** | **SOL** | **TRA-GUARDO** | **TECA** | **METELLA** | **RITROVO** | **JOSEPH** | **RING-O** | **URUSHI** LOW TABLE, INDOOR - OUTDOOR, HAND-WELDED METAL FRAME AND METAL TOP^[109] | **KOM** | **NINFEA** | **BIANCONIGLIO** | **BAND** | **OH** | **ANACLETO** | **DEFRAME** INDOOR - OUTDOOR BOOKCASE MADE OF LASER-CUT HAND-WELDED METAL^[109] | **DAIQUIRI** | **STICK** INDOOR - OUTDOOR METAL TRIMS SYSTEM OF VARIABLE HEIGHTS TO BE FIXED ON THE WALL^[110] | **I-TUBE** INDOOR - OUTDOOR LOW TABLE METAL FRAME^[110] | **RUBIC** | **TIE** | **DAME** | **DATE** | **INCONTRO** INDOOR - OUTDOOR POUF, RIGID POLYSTYRENE FRAME WITH HAND-TROWELLED BLACK OR GREY LAVA DUST FINISH^[110] | **METELLA** | **FANTE** | **RE** | **REGINA** | **PIXIE** | **ILE** | **SUN** | **TORII** | **CROSSING** |





URUSHI | HEN | CHARLIE | DUENDE | OTRAN | TWITTY |
STRIP | HYPPO | I-TUBE | INCONTRO | SOUL | DEFRAME
| SEN-SU | SALENTO | TATOU | SEN-TO | **ROCK CHAIR**
INDOOR - OUTDOOR METAL ARMCHAIR^[113; 114] | CHIKA |
DINKA | **CROSSING** RECTANGULAR INDOOR - OUTDOOR
TABLE^[113] | GROOVE | JETSET | SADDLE | BENNA |
NEWSLETTER | MILLERIGHE | **FIT** INDOOR - OUTDOOR
BOOKCASE, CURVED METAL^[113] | SOL | TRA-GUARDO |
STICK | TECA | METELLA | **AEREA** INDOOR - OUTDOOR
METAL SHEET BENCH^[114] | RITROVO | JOSEPH | RING-O |
BIANCONIGLIO | BAND | OH | ANACLETO | KOM | NINFEA
| **BADRI YELLOW** CARPET^[114] | DAIQUIRI | RUBIC | TIE |
DAME | DATE | TORII | METELLA | FANTE | RE | REGINA |
SHEER | PIXIE | ILE | SUN | **TRAME** INDOOR - OUTDOOR
POUF, CURVED METAL^[114] |





AEREA | LINEA | **ROCK DAYBED** INDOOR - OUTDOOR
METAL FRAME WITH FULL-GRAIN LEATHER^[117] | JOSEPH
| **ROCK CHAIR** INDOOR - OUTDOOR METAL ARMCHAIR
^[117; 121] | DUENDE | BENNA | **METELLA** INDOOR - OUTDOOR
METAL FRAME^[117; 118] | TWITTY | STRIP | HYPPO | I-TUBE
| INCONTRO | SOUL | **HEN** INDOOR - OUTDOOR
ARMCHAIR, CURVED METAL^[118] | DEFRAME | SEN-SU |
SALENTO | SHEER | URUSHI | TATOU | SEN-TO | CHIKA |
NINFEA INDOOR - OUTDOOR LOW TABLE^[118] | DINKA |
GROOVE | JETSET | SADDLE | **TRAME** INDOOR - OUTDOOR
POUF, CURVED METAL^[121] | BENNA | BAND | NEWSLETTER |
BADRI | **CROSSING** RECTANGULAR INDOOR - OUTDOOR
TABLE^[121] | MILLERIGHE | OTRAN | TRA-GUARDO | STICK |
TECA | RITROVO | **FIT** INDOOR - OUTDOOR METAL TRIMS
SYSTEM^[121] | RING-O | BIANCONIGLIO | OH | ANACLETO |
KOM | DAIQUIRI | RUBIC | TIE | DAME | DATE | TORII | FANTE
| RE | REGINA | SOL | PIXIE | ILE | SUN | CHARLIE |







AEREA | **FIT** INDOOR - OUTDOOR BOOKCASE, CURVED METAL^[122] | LINEA | URUSHI | HEN | **ROCK LOUNGE** INDOOR - OUTDOOR METAL ARMCHAIR^[122] | CHARLIE | DUENDE | TWITTY | **I-TUBE** INDOOR - OUTDOOR LOW TABLE METAL FRAME^[122] | **OTRAN** INDOOR - OUTDOOR ARMCHAIR WITH OR WITHOUT ARMRESTS, METAL FRAME WITH FULL-GRAIN LEATHER^[124] | STRIP | **INCONTRO** INDOOR TABLE WITH METAL INTERNAL FRAME COVERED WITH RIGID POLYSTYRENE, WOOD FIBRE TOP WITH HAND-TROWELLED BLACK LAVA DUST FINISH^[124] | SOUL | **DEFRAME** INDOOR - OUTDOOR BOOKCASE MADE OF LASER-CUT HAND-WELDED METAL^[124] | SEN-SU | SALENTO | SHEER | TATOU | SEN-TO | CHIKA | DINKA | GROOVE | JETSET | SADDLE | TRAME | BENNA | NEWSLETTER | MILLERIGHE | SOL | TRA-GUARDO | STICK | TECA | METELLA | RITROVO | JOSEPH | RING-O | BIANCONIGLIO | **INCONTRO** INDOOR - OUTDOOR POUF, RIGID POLYSTYRENE FRAME WITH HAND-TROWELLED BLACK OR GREY LAVA DUST FINISH^[124] | BAND | OH | ILE | ANACLETO | KOM | NINFEA | DAIQUIRI | CROSSING | RUBIC | TIE | DAME | **BADRI RED** CARPET^[124] | DATE | TORII | METELLA | FANTE | RE | REGINA | PIXIE | SUN | HYPPO |



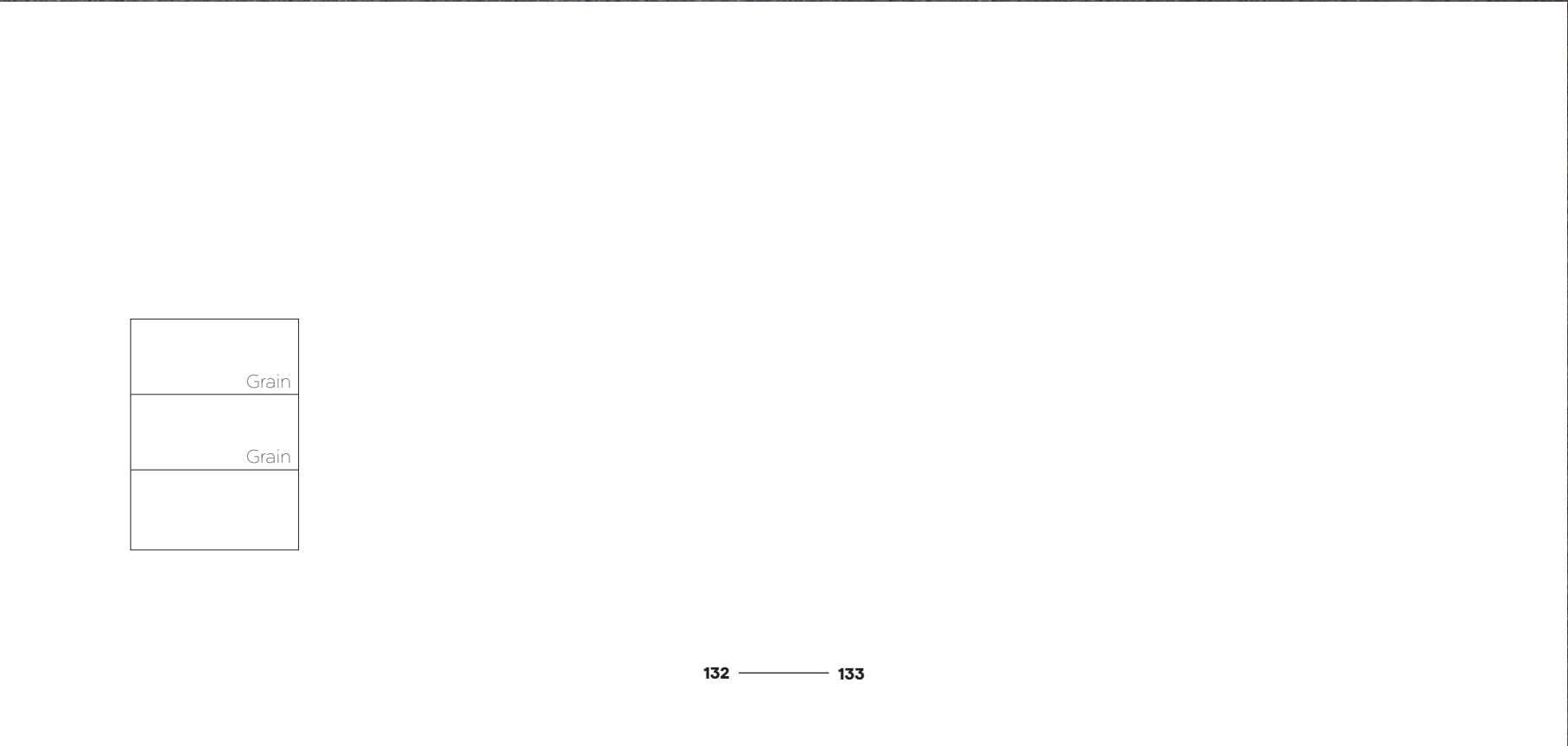
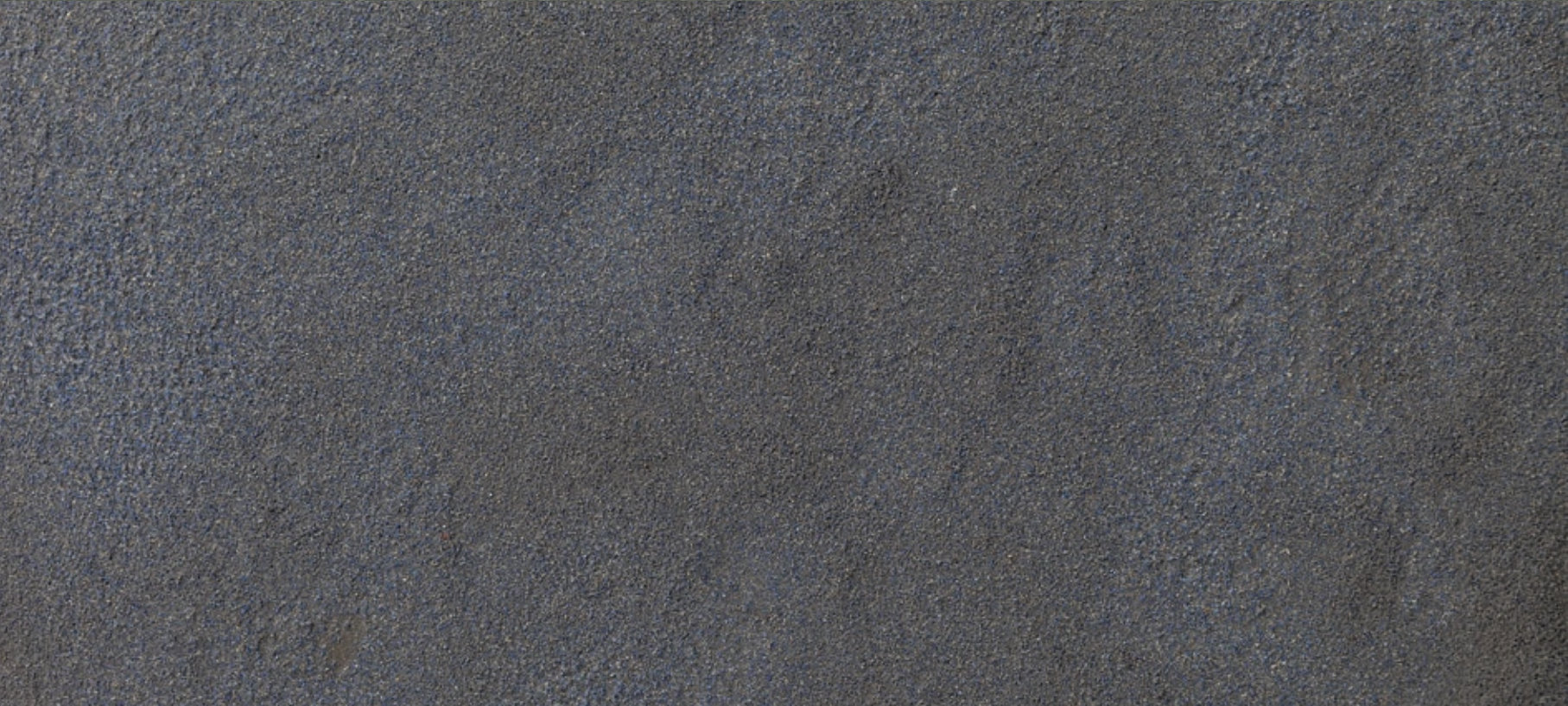


AEREA | **OTRAN** INDOOR - OUTDOOR ARMCHAIR WITH OR WITHOUT ARMRESTS, METAL FRAME WITH FULL-GRAIN LEATHER^[127] | HEN | **I-TUBE** INDOOR - OUTDOOR LOW TABLE METAL FRAME^[127] | CHARLIE | TWITTY | URUSHI | STRIP | HYPPO | INCONTRO | **LINEA** INDOOR - OUTDOOR METAL SHEET BENCH^[127] | SOUL | DEFRAME | SEN-SU | SALENTO | SHEER | TATOU | SEN-TO | CHIKA | DINKA | **BADRI GREEN** CARPET^[127] | GROOVE | SADDLE | TRAME | BENNA | NEWSLETTER | MILLERIGHE | **FIT** INDOOR - OUTDOOR BOOKCASE, CURVED METAL^[127] | SOL | **DUENDE** INDOOR - OUTDOOR METAL TABLE LAMP WITH DIRECTABLE LED SPOTLIGHT^[127] | STICK | TECA | METELLA | RITROVO | JOSEPH | **ROCK STOOL** INDOOR - OUTDOOR METAL ARMCHAIR^[128] | RE | RING-O | BIANCONIGLIO | BAND | OH | ANACLETO | KOM | NINFEA | DAIQUIRI | CROSSING | RUBIC | TIE | DAME | **DATE** INDOOR - OUTDOOR TABLE, HAND-WELDED METAL FRAME AND METAL TOP^[128] | TORII | METELLA | FANTE | REGINA | PIXIE | ILE | SUN | TRA-GUARDO | JETSET |

TECNICHE DI LAVORAZIONE LEGATE ALLA TRADIZIONE E ALL’UTILIZZO DI TECNOLOGIE ALL’AVANGUARDIA

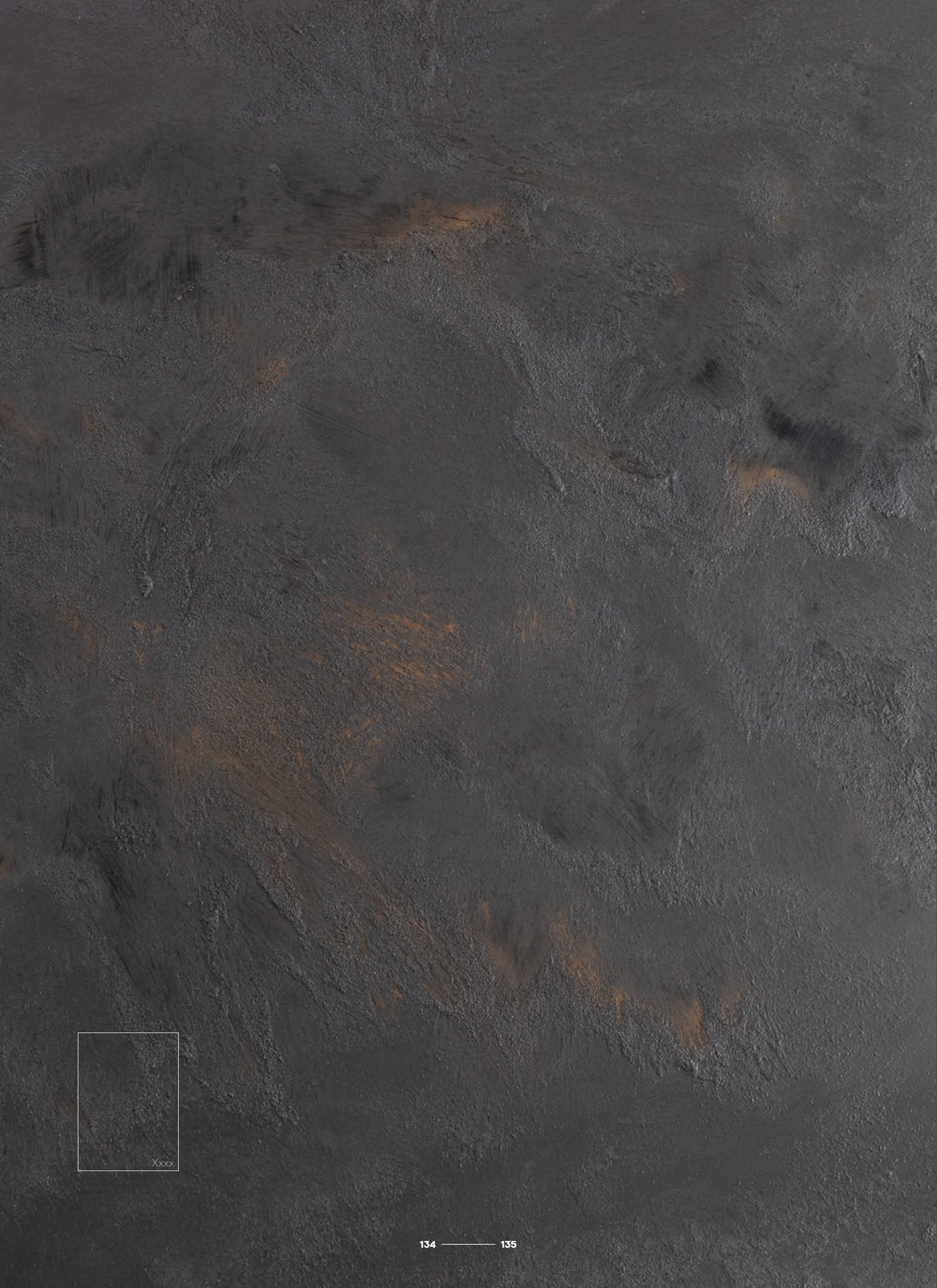
Prodotti di qualità che conservano caratteristiche proprie e distintive. Il metallo rappresenta l'elemento base di complementi e oggetti che la trasformazione della materia e della forma ha reso unici.

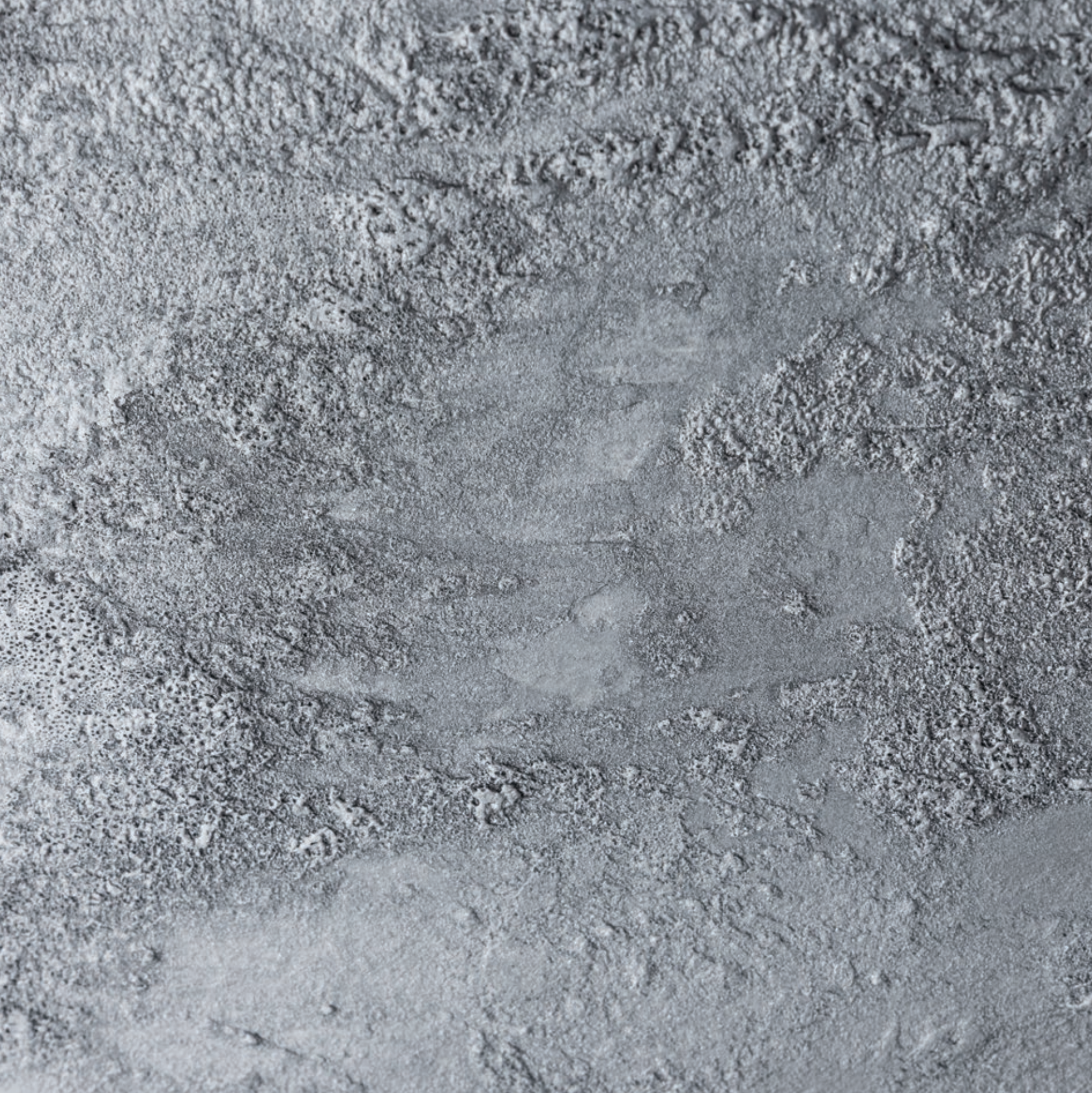
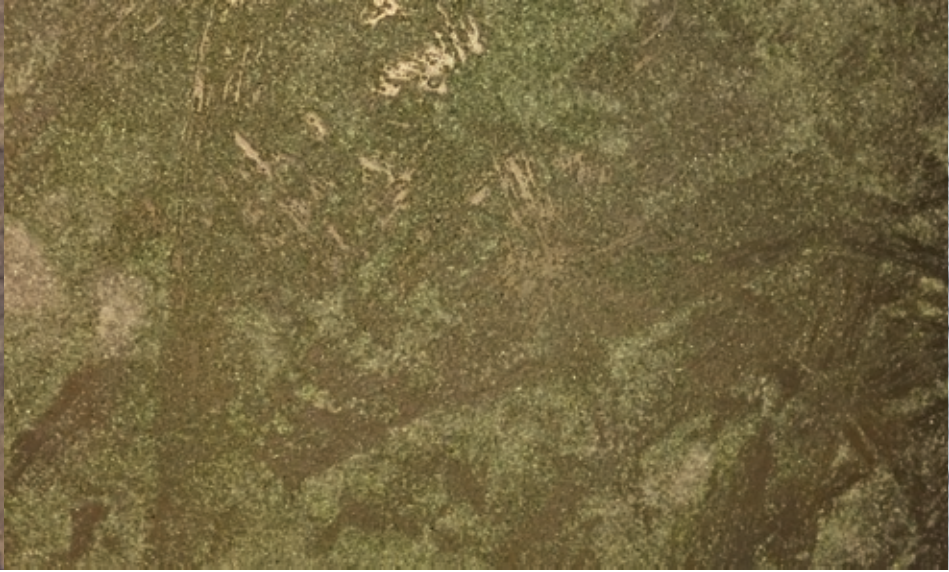
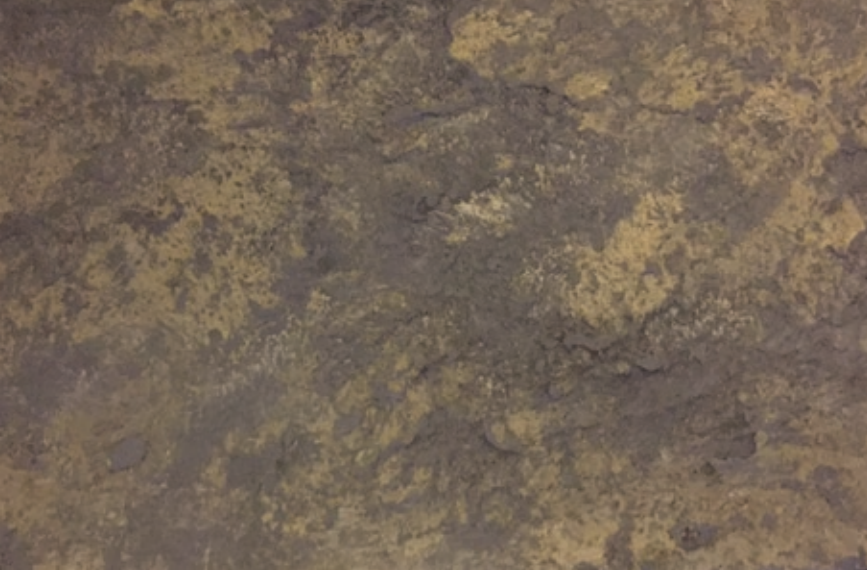




| |
|-------|
| Grain |
| Grain |
| |

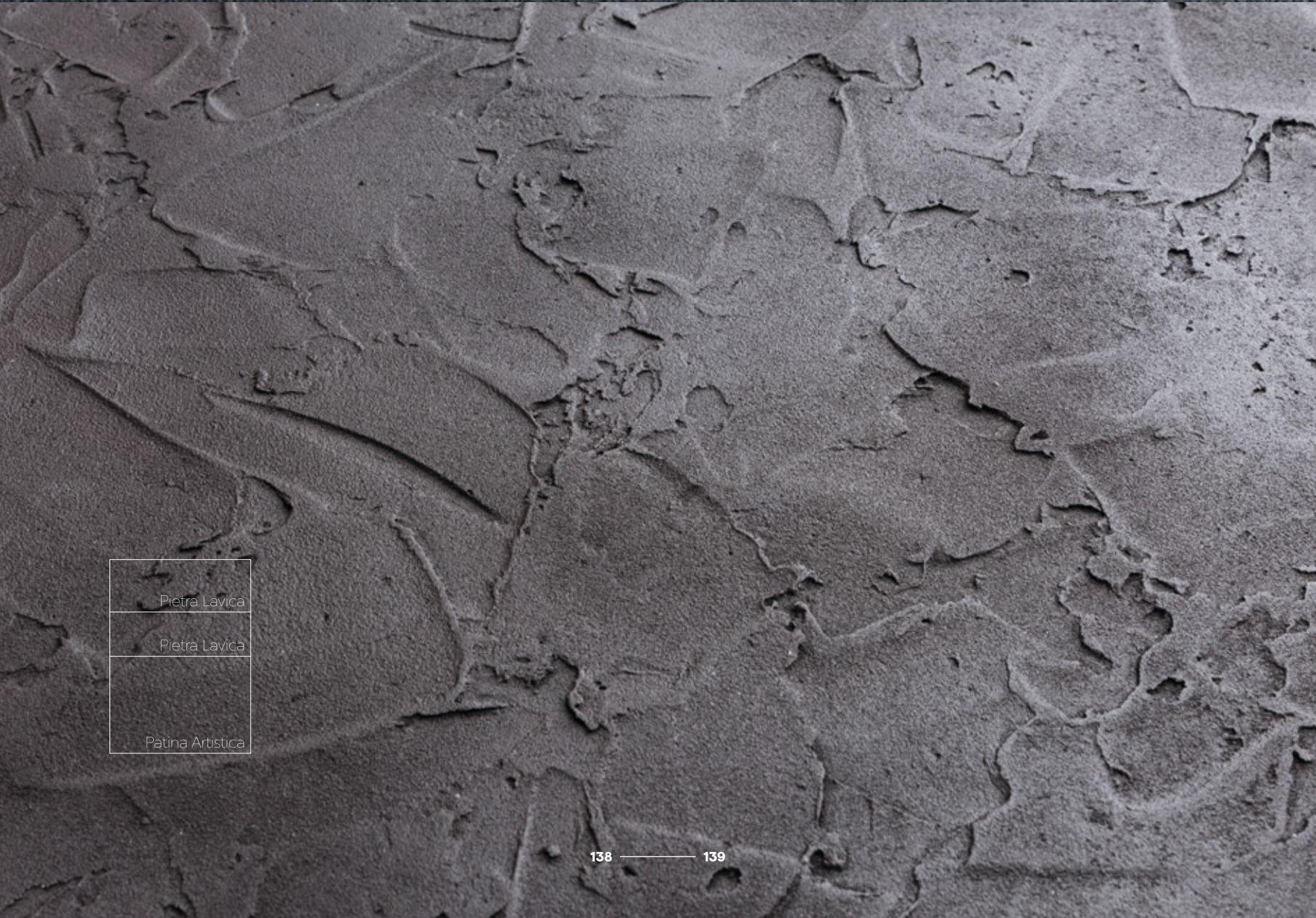
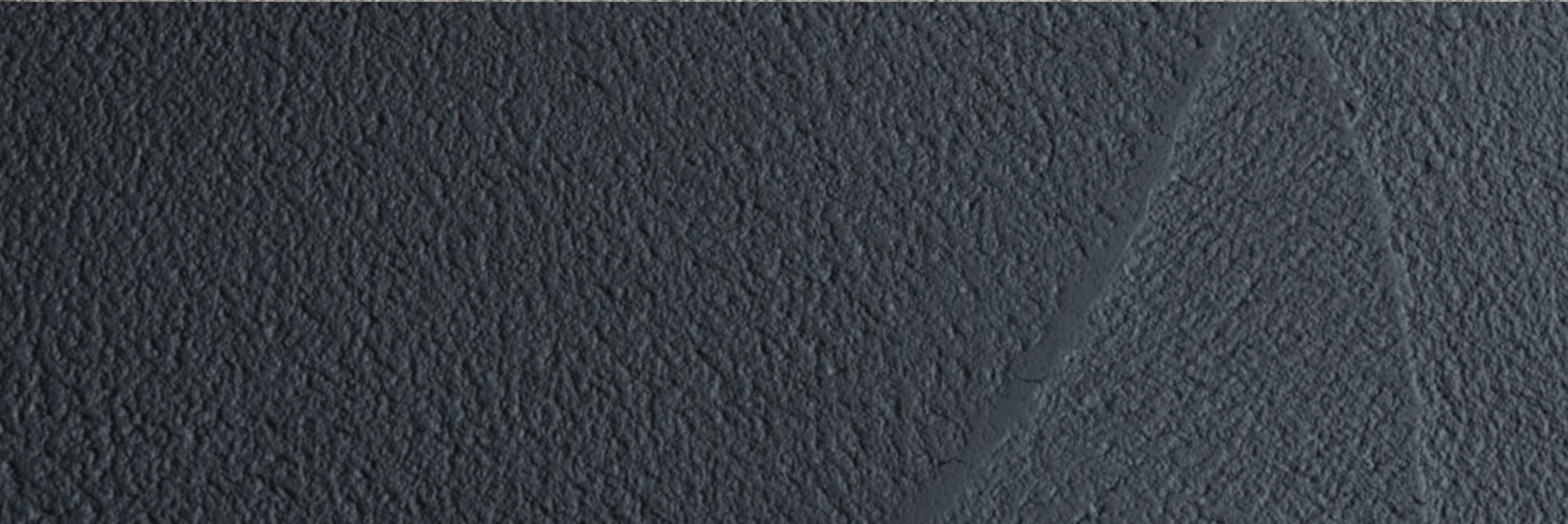
| |
|-------|
| Grain |
| Grain |
| Grain |





| | |
|------|-------|
| | |
| | Grain |
| Xxxx | Xxxx |
| | |

| |
|-------------|
| |
| Wara Ibushi |
| |



| |
|------------------|
| Pietra Lavica |
| Pietra Lavica |
| Patina Artistica |



| | |
|---------------------|--|
| Taranta | |
| Cinabrio Rutenio | |
| Focara | |
| Ottone Bronzato | |



Photographer - Thomas Pagani
Interior & Shooting Concept - Studio MILO
Graphic Design - Studio Prodesign

Bruna Taurino - PROJECT MANAGER
Anna Laneve - ART DIRECTOR
Cosimo Cinefra - KEY ACCOUNT MANAGER

Daa
viale Gran Bretagna 5
73100 Lecce Z.I. Italia

www.daaitalia.com
t. +39 0832.36.14.41
info@daaitalia.com